

WMSD Q&A & BREVIA



CURRENT SERIES:

Not That Into You
Week 1: The Breakup?



iANNOUNCEMENTS!

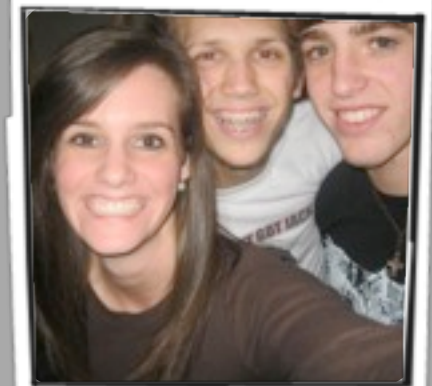
- ➔ WELCOME BACK EVERYONE! YOU HAVE BEEN MISSED!
- ➔ Start talking up **The Mix** in small groups! This is going to be an amazing experience!

CALENDAR:

- ➔ THE MIX
- ➔ DOUBLE-DAWG-DARATHON

ATHENS CHURCH
THE FOUNDRY BUILDING
330 N. Thomas St.
Athens, Ga 30601

iPICTURES!



www.facebook.com/AthensChurchInsideOut



www.facebook.com/AthensChurchXtreme



Follow us @acstudents
Encourage your students to do the same!



Listen to messages online at
www.athenschurch/families/students-messages

Not That Into You: The Breakup

Bottom Line: Our relationship with God has moments when we feel close, and moments when we're just not that into him.

Message Overview:

"God, I'm just not that into You." It sounds scary to admit that aloud, doesn't it? But if you and I were completely honest, we would confess there are times when our relationship with God seems flat. There are times when our excitement fades, and the spark that used to be there disappears. So we walk away or we let the relationship die. But what happens when that relationship you're not that into anymore is the one you have with God? You were really into Him at one point. You were feeling connected, directed, close. Now it feels like nothing. There can be any number of reasons why. **The goal today is for your students to have the chance to honestly admit their feelings about their relationship with God, regardless of how close to Him they may or may not feel.**

Scripture References: Jeremiah 2:28-29, 32; Deuteronomy 8:7-17

Questions:

- 1.) Can you think of people you used to be friends with and then after some time you didn't want to hangout with them anymore you just kind of "lost interest"? Why? What happened to change the relationship with that person?
- 2.) How does it feel when you are around these people? Do you ever think about what the friendship used to look like?
- 3.) Have you ever felt this way about God? Like you used to feel close to Him, but now, for whatever reason, you're "not that into" Him anymore?
- 4.) What would a relationship where you are not that into God look like?
- 5.) We said that there are two things that usually get us to a place where we aren't that into God—when things are going really well, and when things are going really badly. Which of these two things is more likely to make you lose your interest in God?
- 6.) Why would things going badly cause someone to lose interest in God? Why would things going well cause someone to lose interest in God?
- 7.) Sometimes you lose interest in God simply because you are bored—not because of anything particularly good or bad happening, or even because of anything you have done. What do you think causes you to get "bored" with God?
- 8.) If you were to rate how close you feel to God on a scale of 1 to 10, 1 being as far away from Him as you've ever felt and 10 being the closest to Him as you've ever felt, what would your response be? Where do you stand right now with God?
- 9.) Is it hard for you to be honest about where you are with God? Why or why not? Are you satisfied with where you are? Do you want it to change? Do you believe that's possible? Why or why not?

The Next Step:

IO/X: Take some time this week to read **Ecclesiastes 3:1-8**. Read the verse keeping in mind where you are in your relationship with God. Understanding that there is a season for everything, what kind of season does it feel like you are in with your relationship with God? What kind of seasons have you been in before, and what kind of season are you hoping to arrive to?